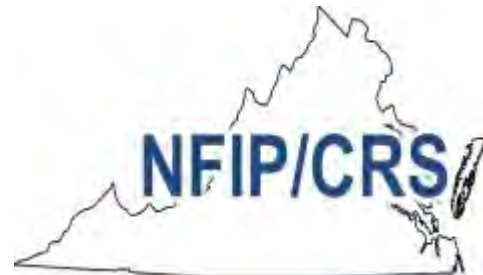


Coastal Virginia CRS Workgroup January 2021 Meeting

COASTAL VIRGINIA COMMUNITY RATING SYSTEM WORKGROUP



WORKING TOGETHER FOR A STRONGER VIRGINIA



WETLANDS
WATCH



UPDATES / ANNOUNCEMENTS

WORKGROUP MEETING INTRODUCTIONS

Zoom manners

2020 Meeting Dates (Zoom)

Wednesday, March 21, 10AM-Noon

Wednesday, May 26, 10AM-Noon

CFM CECs

March meeting – 1 CEC

May meeting – 1 CEC

July 2020 – 1 CEC

September 2020 – not submitted yet



WETLANDS
WATCH

WWW.WETLANDSWATCH.ORG



VA FLOODPLAIN MANAGEMENT ASSOCIATION - 2021 MEMBERSHIP CALL



Individual Memberships (\$25.00)

- Networking Opportunities
- Training and Workshops
- Membership Directory
- Quarterly Newsletters

Corporate Memberships (\$150.00)

- Same access as Individual Members
- Includes 7 members (1 membership free – \$25 discount)
- Company logo on the VFMA website

[Link to membership page](#)



WETLANDS
WATCH

WWW.WETLANDSWATCH.ORG



ISO CONTACTS WORKING IN VIRGINIA

Emily Schmidt

ISO/CRS Specialist

emily.schmidt@verisk.com

Doug Reedy is retiring from ISO

douglas.reedy@verisk.com



WETLANDS
WATCH

WWW.WETLANDSWATCH.ORG



JAMES CITY COUNTY - VA'S ONLY CLASS 5

Presenter today!

Darryl Cook

Assistant Director, Stormwater

757-253-6781

Darryl.Cook@jamescitycountyva.gov



WETLANDS
WATCH

WWW.WETLANDSWATCH.ORG





Floodplain Program – Community Rating System

Darryl Cook – Stormwater and Resource Protection Division
January 26, 2021

National Flood Insurance Program

- James City County participates in the NFIP allowing residents and businesses to purchase federal flood insurance
- There are approximately 1,000 policies in force in the County
- 2000 parcels with structures in the SFHA

Community Rating System

- FEMA developed the CRS in 1990 to provide incentives for communities to go beyond the NFIP minimum program requirements
- The incentive is premium discounts for policy holders
- Participation is voluntary
- 19 Activities are credited in these four categories
 - Public Information
 - Mapping and Regulations
 - Flood Damage Reduction
 - Flood Warning and Response
- Activities in these categories earn credit points

Credit Points	Class	Premium Reduction SFHA*
4,500+	1	45%
4,000 – 4,499	2	40%
3,500 – 3,999	3	35%
3,000 – 3,499	4	30%
2,500 – 2,999	5	25%
2,000 – 2,499	6	20%
1,500 – 1,999	7	15%
1,000 – 1,499	8	10%
500 – 999	9	5%
0 – 499	10	0

James City's CRS Experience

- James City County has participated in the CRS program since 1992
- Entered as a Class 9 community
- Communities are reviewed once every five years to determine their classification in the CRS program and their premium discounts
- After the cycle visits, our classifications increased to an 8 then to a 7 which resulted in a 15% discount for premium holders

Cycle Visit 2018

- Goal was to increase to Class 6 – 20% discount
- Not all activities are equal – some are worth thousands of points, other much less
- Concentrated on the higher point value activities first - then as time permitted, went after points in almost every category

Activity	Maximum Possible Points
300 Public Information Activities	
310 Elevation Certificates	116
320 Map Information Service	90
330 Outreach Projects	350
340 Hazard Disclosure	80
350 Flood Protection Information	125
360 Flood Protection Assistance	110
370 Flood Insurance Promotion ⁵	110
400 Mapping and Regulations	
410 Flood Hazard Mapping	802
420 Open Space Preservation	2,020
430 Higher Regulatory Standards	2,042
440 Flood Data Maintenance	222
450 Stormwater Management	755
500 Flood Damage Reduction Activities	
510 Floodplain Mgmt. Planning	622
520 Acquisition and Relocation	2,250
530 Flood Protection	1,600
540 Drainage System Maintenance	570
600 Warning and Response	
610 Flood Warning and Response	395
620 Levees	235
630 Dams	160

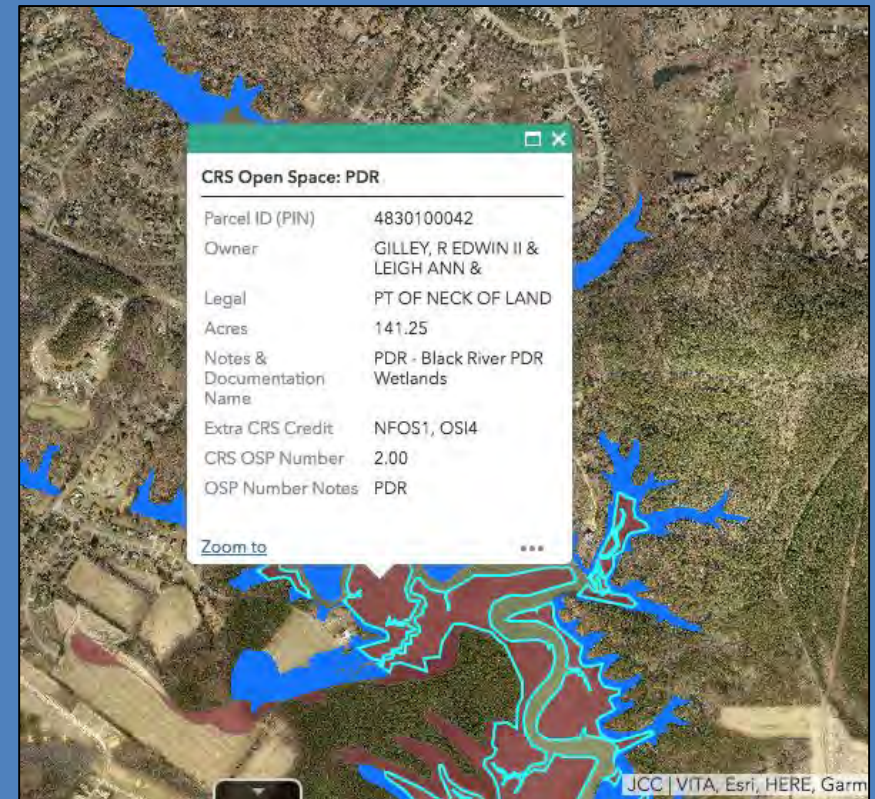
Cycle Visit 2018

- Result was an increase to a Class 5 (had enough points to be a Class 4 but did not have all the prerequisites)
- Saving of over \$100,000 for citizens
- Most points were earned in 420 - Open Space Preservation
- Second highest category was 430 - Higher Regulatory Standards
- Points were earned in almost all categories
- Credits in the Mapping and Regulations category are subject to a Community Growth Factor (CGA) for growing communities

Community : James City County, VA		NFIP Number : 510201	
720 COMMUNITY CREDIT CALCULATIONS (Cycle):			
CALCULATION SECTION :			
Verified Activity Calculations:			Credit
c310	31		31
c320	70		70
c330	145		145
c340	5		5
c350	69		69
c360	69		69
c370			
c410	26	x CGA 1.14 =	30
c420	1278	x CGA 1.14 =	1457
c430	534	x CGA 1.14 =	609
c440	118	x CGA 1.14 =	135
c450	92	x CGA 1.14 =	105
c510	300		300
c520			
c530	31		31
c540	16		16
c610	210		210
c620			
c630			
Community Classification Calculation:			
cT = total of above		cT =	3282
Community Classification (from Table 110-1):		Class =	*5
*Community has the points for a Class 4 but does not meet the Class 4 prerequisites.			

420 Open Space Preservation

- James City is fortunate to have protected floodplains by various policies and regulations such as the Chesapeake Bay Preservation Ordinance, floodplain ordinance, provisions in the subdivision ordinance and other environmental policies for many years
- The county's stormwater management ordinance also gave compliance credit for preserving natural open space in easements dedicated to the county
- These various protection policies and ordinance requirements were compiled and presented in a document
- A GIS based map and database were prepared that gave a parcel by parcel presentation of the protected properties
- End result – 85% of the Special Flood Hazard area is preserved as open space. 70% is protected as RPA
- Received Invaluable Assistance from Wetlands Watch – Mary-Carson Stiff



OPS Website Home Screen

The screenshot displays the OPS Website Home Screen. At the top, there is a green header with the JCC logo and a search bar labeled "Address or PIN". Below the search bar is a map of a residential area with various colored overlays representing different land use categories. A legend on the right side of the map lists these categories, including CRS RPA, CRS Open Space, and various neighborhoods like Chickahominy Riverfront, Colonies Timeshares, Fords Colony, etc. Below the map, there are tabs for "CRS RPA" and "CRS Open Space". Below the tabs, there are options for "Filter by map extent", "Zoom to", "Clear selection", and "Refresh". At the bottom, there is a table with columns for PIN, Owner1, Legal1, Acres, Notes & Documentation Name, Extra CRS Credit, CRS OSP Number, and OSP Number Notes.

PIN	Owner1	Legal1	Acres	Notes & Documentation Name	Extra CRS Credit	CRS OSP Number	OSP Number Notes
4621200001A	JAMES CITY COUNTY	CONS AREA S-5 P-2 ST GEO 100	5.55	St. George's Hundred neighborhood open space (proffer + CE)	DR, NFOS1	25.00	St. George's Hundred
4640100013	JAMES CITY COUNTY	PT NECK OF LAND: EXISTING COVE OF 1.58AC UNDERWATER	6.89	Jamestown Road Conservation Areas (CE & Map)	DR	11.00	Jamestown Rd
4640100014	JAMES CITY COUNTY	PT OF NECK OF LAND	8.79	Jamestown Road Conservation Areas (CE & Map)	DR	11.00	Jamestown Rd
4640100015	JAMES CITY COUNTY	PT NECK OF LAND	42.71	Jamestown Road Conservation Areas (CE & Map)	DR	11.00	Jamestown Rd
4640200001	JAMESTOWN 1607	COMMON AREA S-A,B,C JAMESTOWN 1607	12.58	Jamestown 1607 neighborhood open space	DR	12.00	Jtwn 1607
464050001A	JAMES CITY COUNTY	PARCEL & CHISMAN TO ICC	9.31	St. George's Hundred	DR, NFOS1	25.00	St. George's Hundred

430 Higher Regulatory Standards

- 2 feet freeboard above BFE for new and substantial improvement construction
- Coastal A Zone construction must meet V Zone building requirements
- Regulatory Administration
- Received Local Drainage Requirements
- Building Code Enforcement rating of 2/2
- Adoption of full International Building Code

Other Credited Activities

- 510 – Floodplain Management Planning
 - Adoption and implementation of Hampton Roads Hazard Mitigation Plan. Contains JCC's floodplain management plan
- 610 Flood Warning and Response
 - Credit for threat recognition and notification procedures
 - Designation as a Storm Ready Community
- 330 Outreach Projects
 - Credit for Targeted Outreach Projects such as mailings, door hangers
 - Credit for General Outreach – presentations, social media, publications
- 440 Flood Data Maintenance
 - Floodplain data on GIS is available to all citizens
 - Maps show 100 and 500-year boundaries, coastal high hazard areas, wetlands, RPA buffers
- 450 Stormwater Management
 - Enforcing regulations regarding stormwater management, erosion control and water quality

It Takes a Team to be Successful

- Team Effort by County Staff
 - General Services – Stormwater
 - Community Development – Zoning, Building Safety and Permits
 - Information Resources Management – GIS
 - Emergency Management
 - Housing Office
- Support from Elected Officials
- Received Valuable Assistance from Wetlands Watch – Mary-Carson Stiff

Challenges and Takeaways

- August 22, 2018 - Cycle Visit
- October 1, 2020 - New Classification Effective Date
- Decide if you want to maintain or improve your rating
- Be organized – I prepared cover memo for each activity with projected points. Reviewers seemed to appreciate that.
- Started a share point site where documentation is stored and added to as it is received or developed
- Start with activities that will result in the most points then go after smaller point activities as time allows but go after those points
- Feel free to challenge results if you don't agree with credit award
- Most points were for Open Space Preservation and majority of those were derived from the RPA. Concerned about impact to RPA credits because of recent changes to Chesapeake Bay Act
- Be prepared to provide additional documentation

Community Rating System



- Questions?

CRS MANUAL - 2021 ADDENDUM TO 2017 MANUAL

[LINK TO ADDENDUM](#)



WETLANDS
WATCH

WWW.WETLANDSWATCH.ORG



CBPA DRAFT REGULATIONS + CLIMATE CHANGE

Draft Letter ([view at this link](#))

-Review by Madison Teeter-

POLL QUESTION FOR CFM CECs



WETLANDS
WATCH

WWW.WETLANDSWATCH.ORG



WETLANDS WATCH - VA POLICY RESOURCES

[VA Policy Updates Website](#)

[Commonwealth Resilience Brief](#)



WETLANDS
WATCH

WWW.WETLANDSWATCH.ORG



CLASS 8 FREEBOARD PREREQUISITE

Update from Florida/Rebecca Quinn

Machinery and equipment. Compliance with the FBC requirements for machinery and equipment satisfies the CRS Class 8 prerequisite. FBC, Residential R322.1.6 requires machinery and equipment to be elevated to or above the same elevation required for dwellings. An exception to this allows equipment below if it is designed “to prevent water from entering or accumulating within the components.” This means equipment itself must be resistant to flooding – it does NOT permit techniques considered dry floodproofing to be used to protect machinery and equipment (e.g., inside a walled area designed to be watertight). [ISO/FEMA confirmed](#) that **CRS communities do NOT need to do anything to satisfy this part of the Class 8 prerequisite.** However, care should be taken during plan review, inspection, and review of final Elevation Certificates show machinery and equipment are elevated.



WETLANDS
WATCH

WWW.WETLANDSWATCH.ORG



FEMA RISK RATING 2.0

CRS Program will change...

Rich Sobota shared [this website](#) that will be updated with new info



WETLANDS
WATCH

WWW.WETLANDSWATCH.ORG



WORKGROUP MEMBER/ATTENDEE REPORT OUTS

Time for Workgroup members/attendees to bring up any news, questions, or future meeting topics to the group.



WETLANDS
WATCH

WWW.WETLANDSWATCH.ORG



THANKS!

Mary-Carson Stiff

Wetlands Watch

mc.stiff@wetlandswatch.org



WETLANDS
WATCH

WWW.WETLANDSWATCH.ORG

